

PUSHING BOUNDARIES

Terumo Interventional Systems is **committed to your success** with innovative procedural solutions and ongoing support for your most challenging cases.

We are relentlessly seeking new ways to help you apply effective solutions and achieve **better outcomes for more patients.**



RADIFOCUS® Guidewire M Baby-J™ Hydrophilic Coated Guidewire

Radifocus Guidewire M 1.5mm J-Tip (Baby-J)

| Product Code | Wire Type | Diameter (in) | Total Length (cm) | Flexible Tip Length (cm) | Tip Shape |
|--------------|-----------|---------------|-------------------|--------------------------|-------------|
| RF*GR35153M | Standard | 0.035 | 150 | 3 | 1.5mm J-Tip |
| RF*GR35183M | Standard | 0.035 | 180 | 3 | 1.5mm J-Tip |
| RF*GR35263M | Standard | 0.035 | 260 | 3 | 1.5mm J-Tip |

FIND OUT MORE |  terumo-radialede.com

RX ONLY. Refer to the product labels and package insert for complete warnings, precautions, potential complications, and instructions for use.

References:

1. Hamon M, Pristipino C, Di Mario C, Nolan J, Ludwig J, Tubaro M, et al. Consensus document on the radial approach in percutaneous cardiovascular interventions: position paper by the European Association of Percutaneous Cardiovascular Interventions and Working Groups on Acute Cardiac Care™ and Thrombosis of the European Society of Cardiology. *EuroIntervention*. 2013 Mar;8(1):1242-51. doi: 10.4244/EIJV8I1A192.
2. Shah A, Lau C, Stavropoulos SW, et al. Comparison of physician-rated performance characteristics of hydrophilic-coated guidewires. *J Vasc Interv Radiol*. 2008 Mar;19(3):400-5.
3. Niazi K, Farooqui F, Devireddy C, Robertson G, Shaw RE. Comparison of hydrophilic guidewires used in endovascular procedures. *J Invasive Cardiol*. 2009 Aug;21(8):397-400.
4. Niazi K. Guidewire Satisfaction Study. Data on File 2012. Terumo Medical Corporation.
5. Okuyan H, Hzal F, Taçoy G, Timurkaynak T. Angiographic evaluation of the radial artery diameter in patients who underwent coronary angiography or coronary intervention. *J Invasive Cardiol*. 2013 Jul;25(7):353-7.

©2019 Terumo Latin America Corporation. All rights reserved.
All brand names are trademarks or registered trademarks of their respective owners.



RADIFOCUS® Guidewire M Baby-J™ Hydrophilic Coated Guidewire

CONQUER THE CURVES FOR TRANSRADIAL SUCCESS



AN INNOVATIVE SOLUTION FOR TRANSRADIAL SUCCESS

Compact Design • Ideal Tip Shape • Leading Performance

Transradial access offers many advantages over the traditional femoral approach, including the potential for less pain, fewer complications, faster recovery times, and better clinical outcomes.¹

The TERUMO RADIFOCUS Guidewire M Baby-J 1.5mm combines the leading performance of the RADIFOCUS Guidewire product portfolio with design features ideal for transradial access.

The 1.5mm J-Tip wire's compact size and tip shape is designed to enable physicians to navigate tortuous vessels, which may help to minimize risk of trauma, vasospasm, and procedural interruptions.

- **Enables small vessel access**

Tight J-Tip shape and lubricity retention designed to minimize slide resistance allows for smooth and uninterrupted wire tracking through the small radial and subclavian arteries.

OPTIMIZED FOR THE RADIAL ARTERY

1.5mm Radius

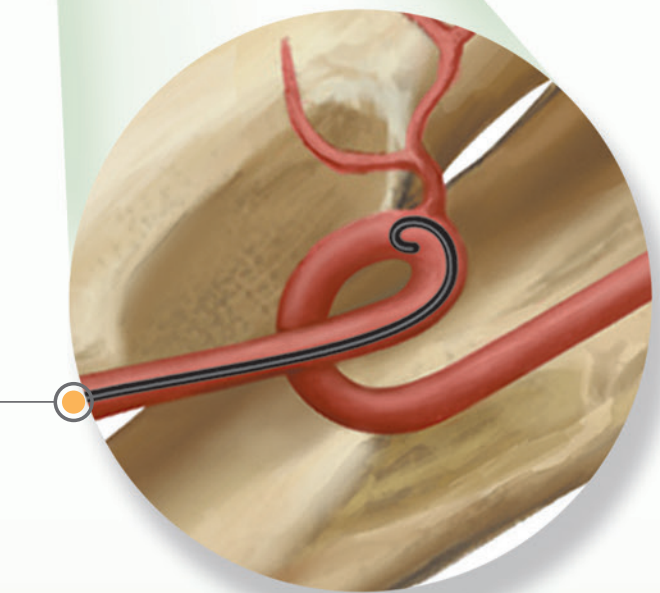
3.0mm Diameter

- **Tracks through tortuous anatomy**

The nitinol alloy core resists kinking in tortuous anatomy, allowing for easier and faster tracking.

- **Avoids radial artery side branches**

The J-Tip wire is designed to avoid side branches of the radial artery and to minimize the potential risk of perforation and other complications.



- 1.5mm J-Tip can track through radial artery with average diameter of 1.9mm - 2.3mm⁵